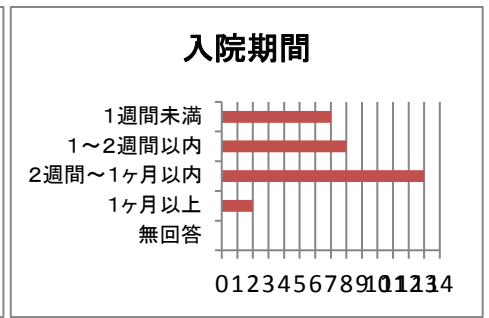
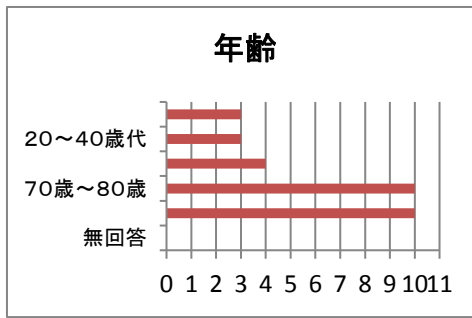
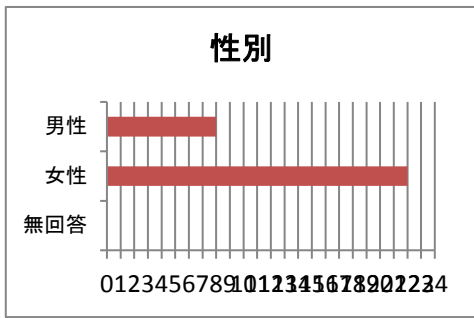
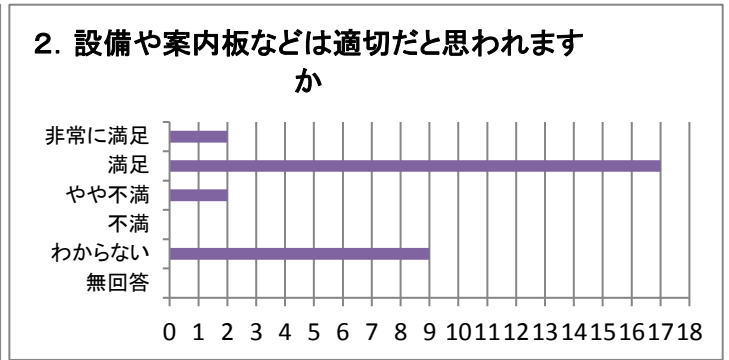
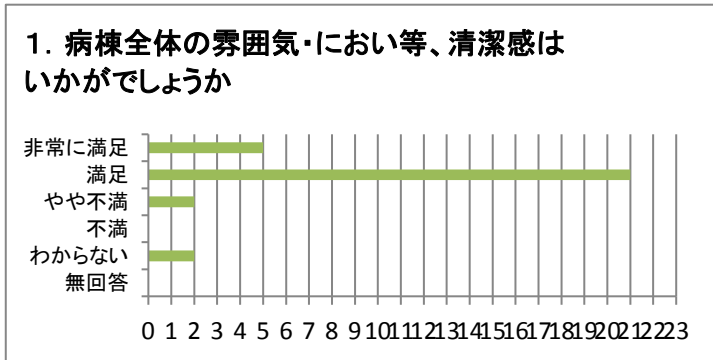


# ・入院患者様アンケート結果

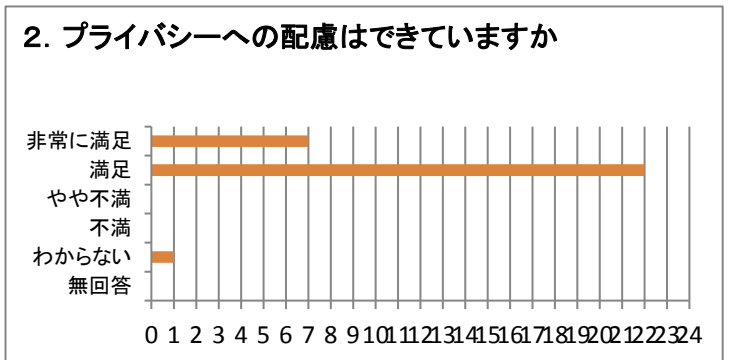
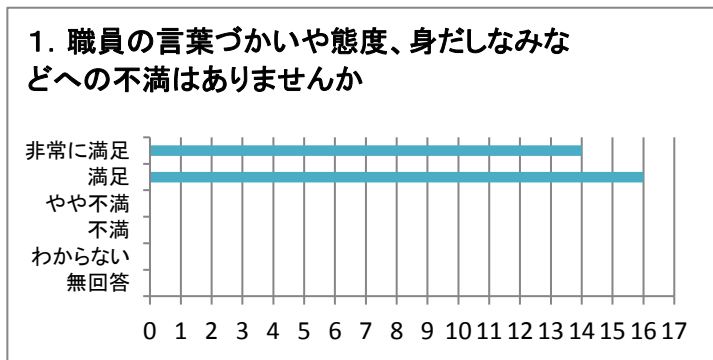
( 1階 )病棟



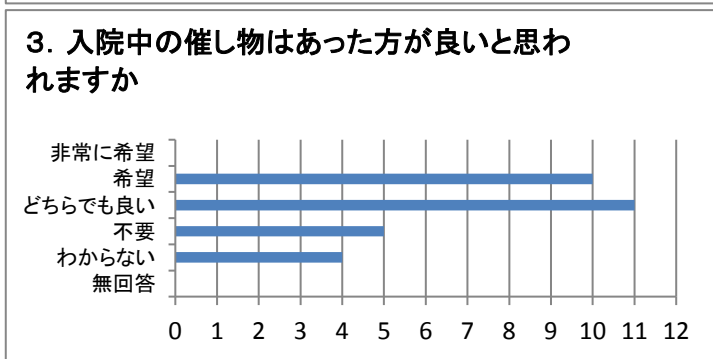
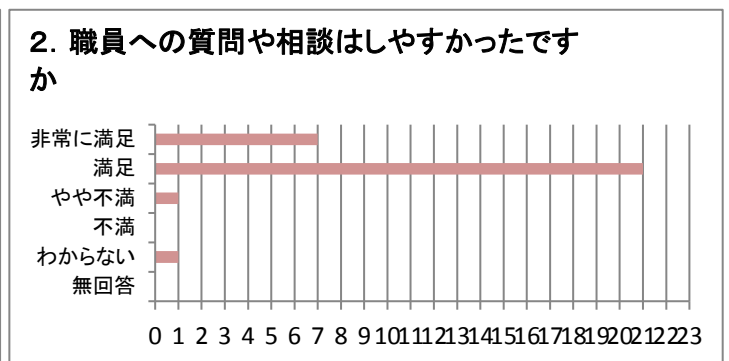
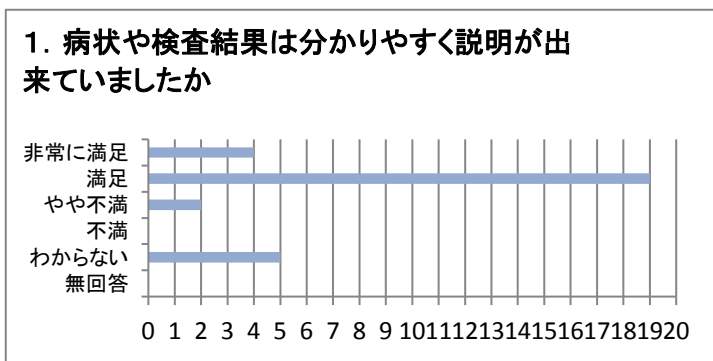
## ・施設面について



## ・接遇面について

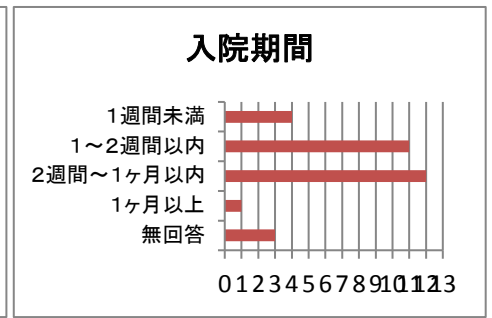
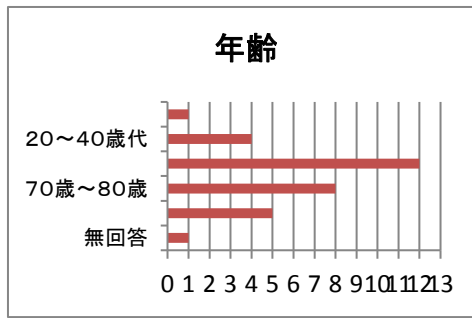
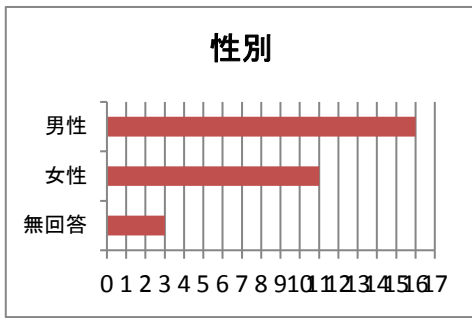


## ・治療に関する事・サービス面について



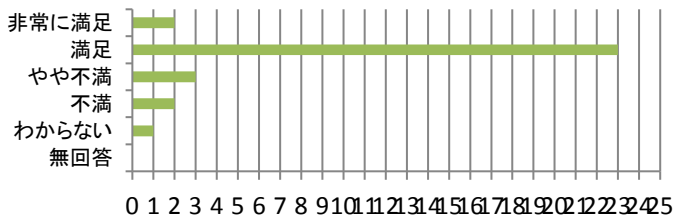
# ・入院患者様アンケート結果

( 東2 )病棟

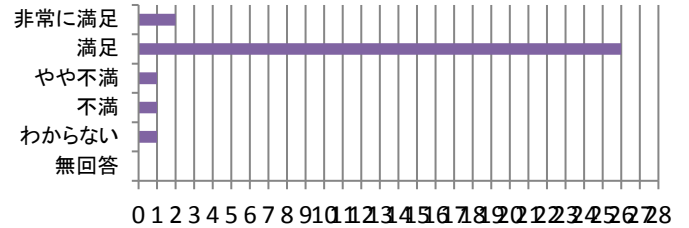


## ・施設面について

1. 病棟全体の雰囲気・におい等、清潔感はいかがでしょう

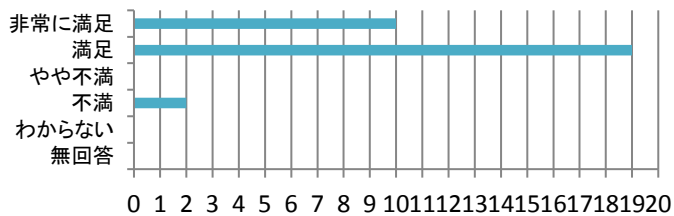


2. 設備や案内板などは適切だと思いますか

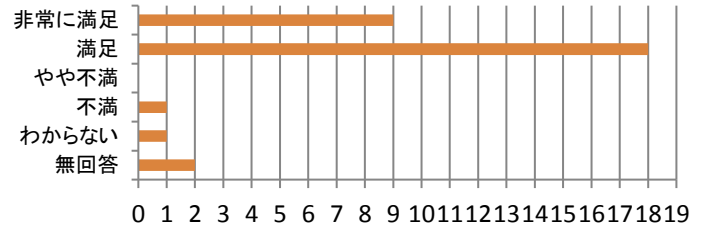


## ・接遇面について

1. 職員の言葉づかいや態度、身だしなみなどへの不満はありませんか

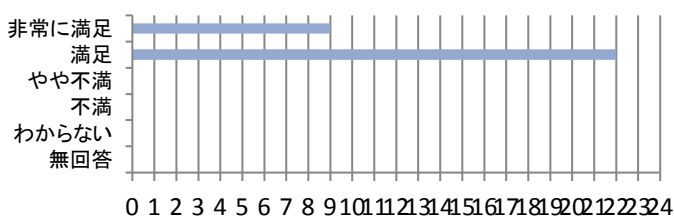


2. プライバシーへの配慮はできていますか

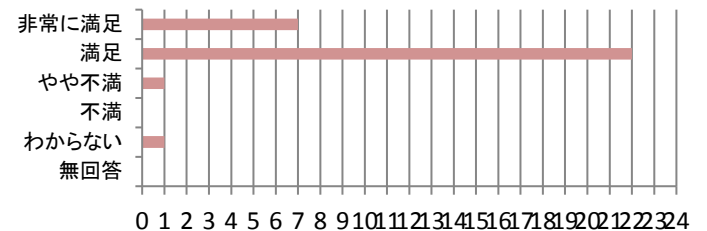


## ・治療に関する事・サービス面について

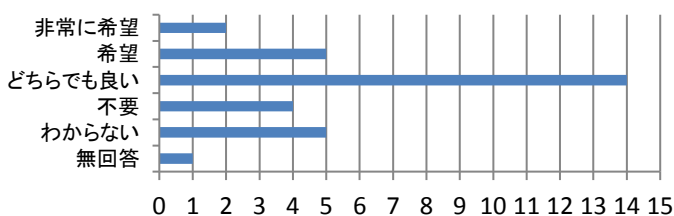
1. 病状や検査結果は分かりやすく説明が来ていましたか



2. 職員への質問や相談はしやすかったですか

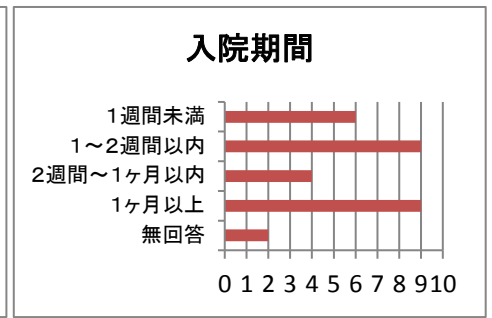
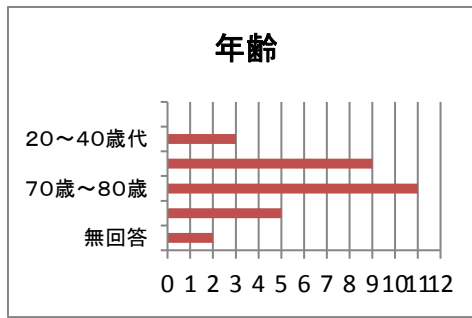
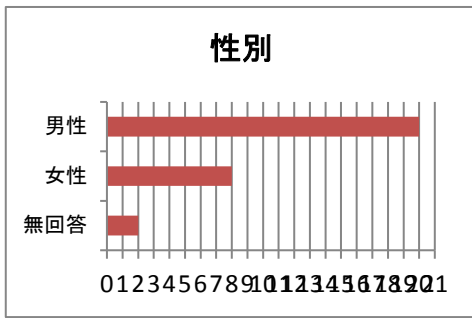


3. 入院中の催し物はあった方が良くと思いますか

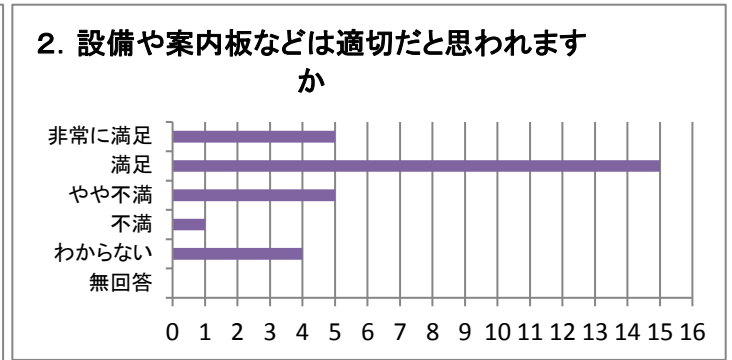
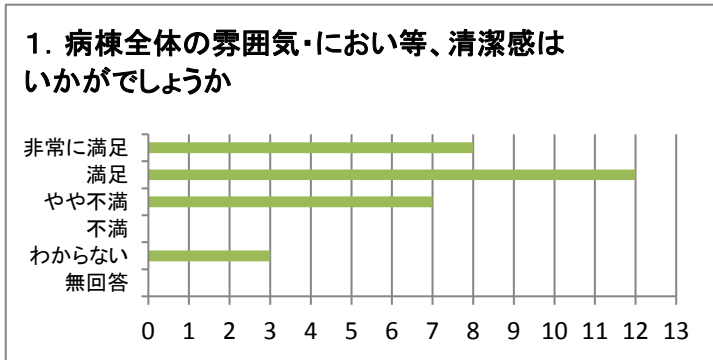


# ・入院患者様アンケート結果

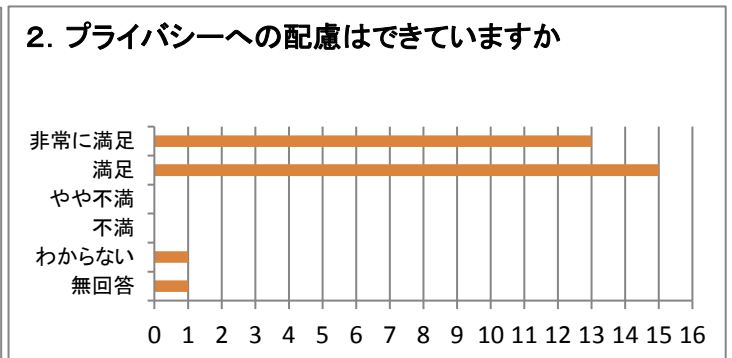
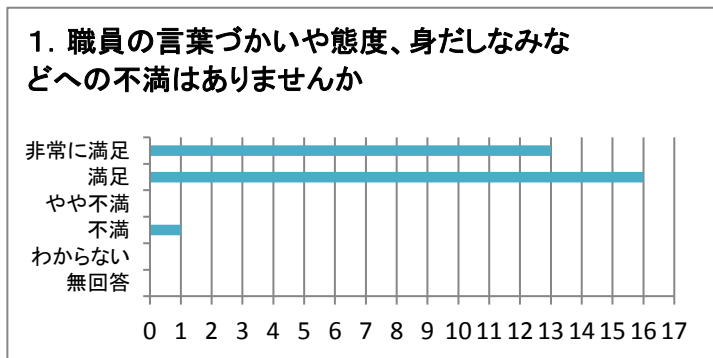
( 西2 )病棟



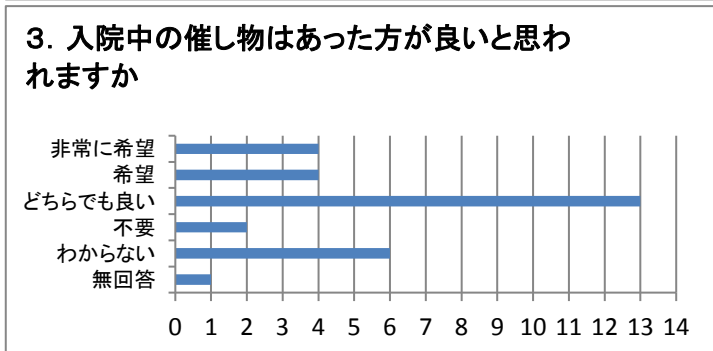
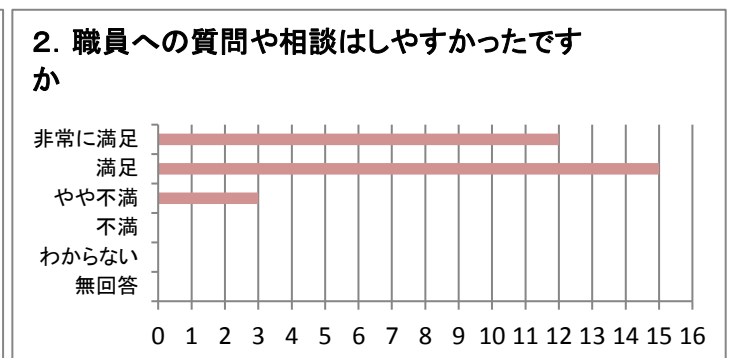
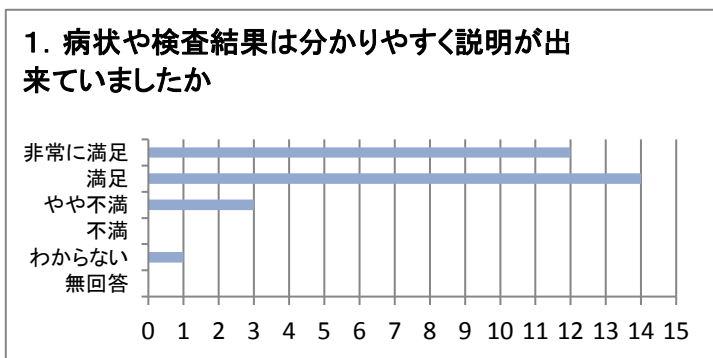
## ・施設面について



## ・接遇面について

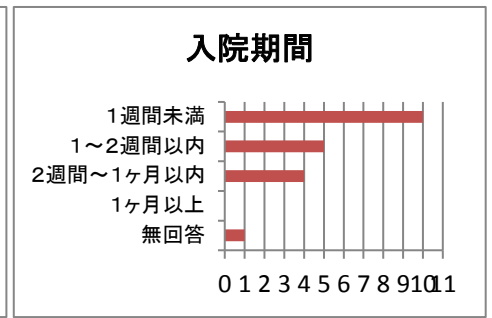
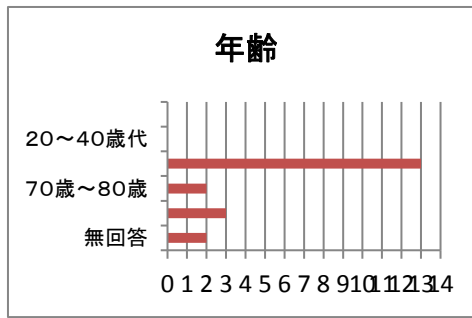
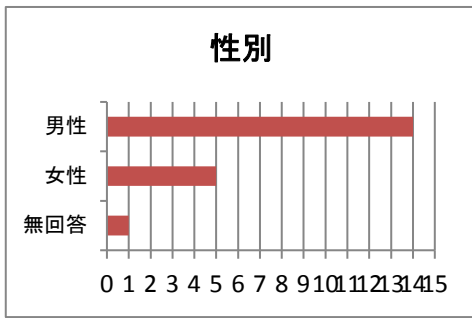


## ・治療に関する事・サービス面について

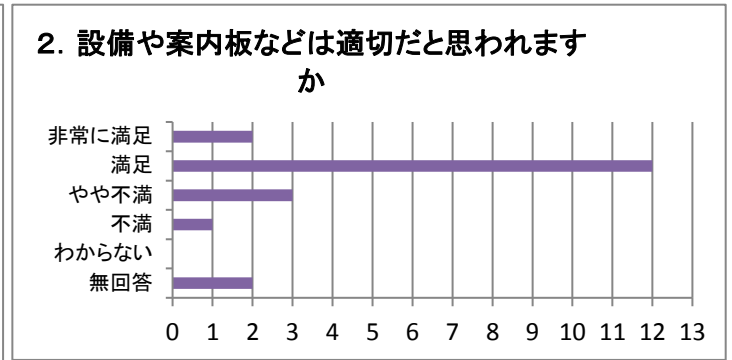
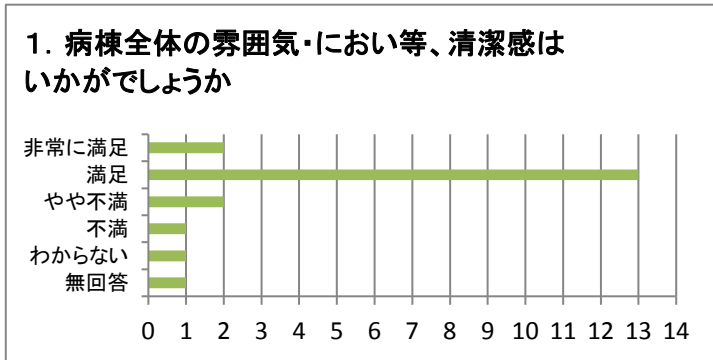


# ・入院患者様アンケート結果

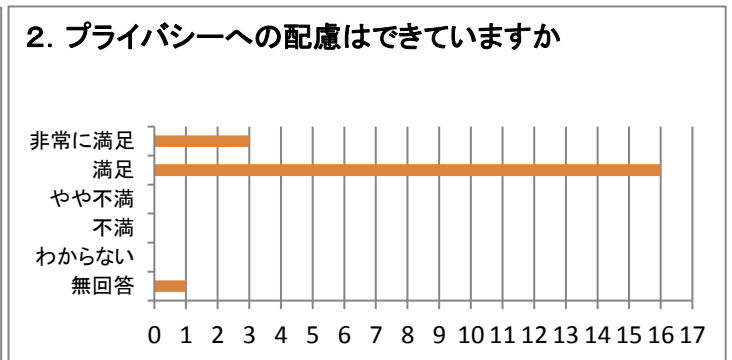
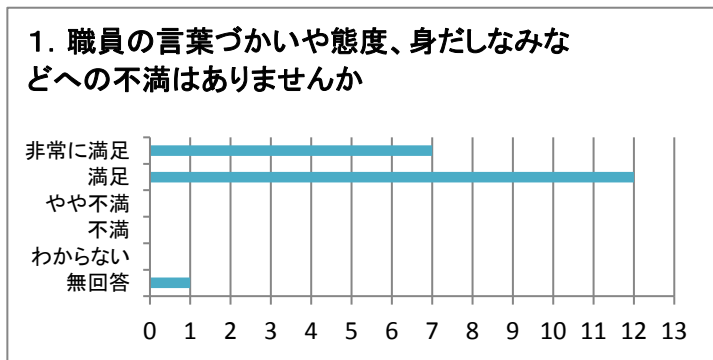
( 東3 )病棟



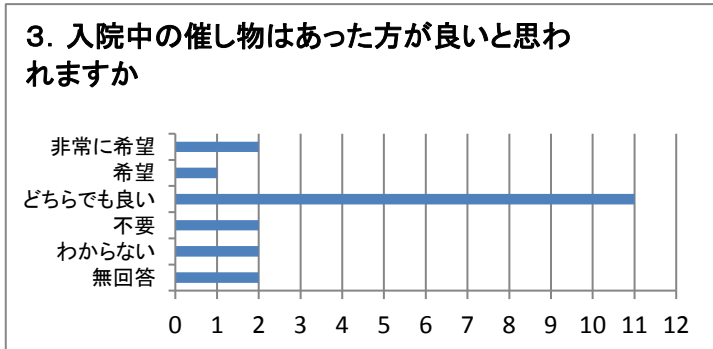
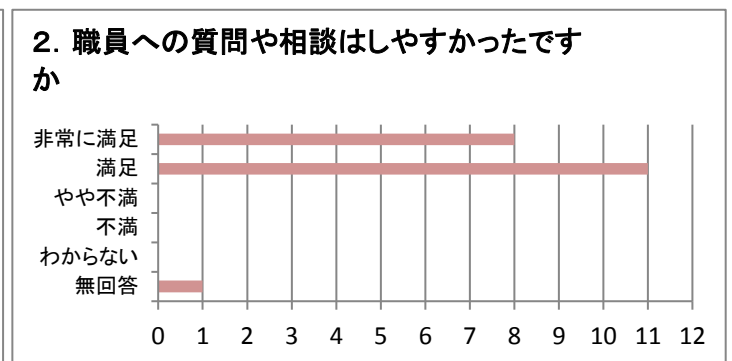
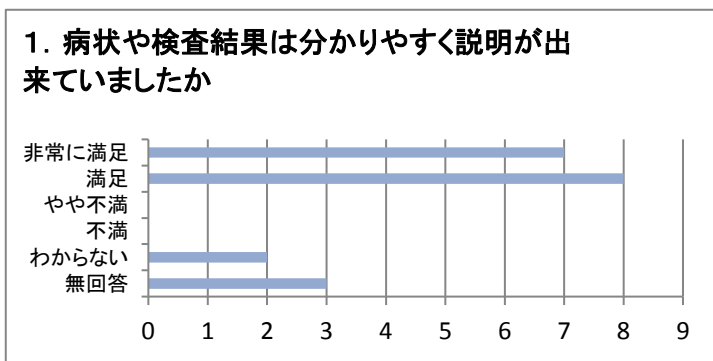
## ・施設面について



## ・接遇面について

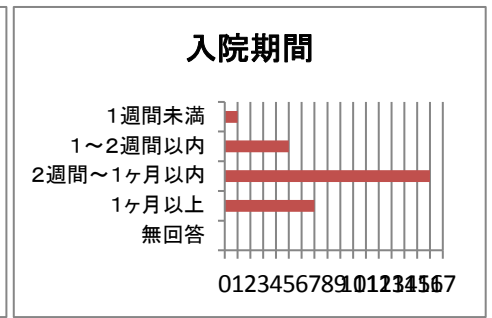
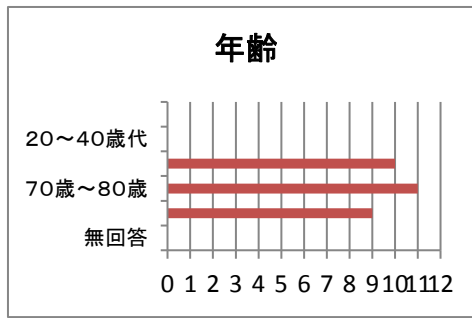
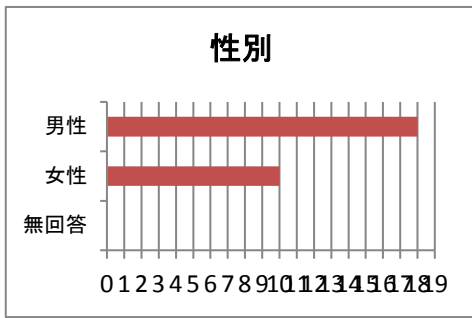


## ・治療に関する事・サービス面について

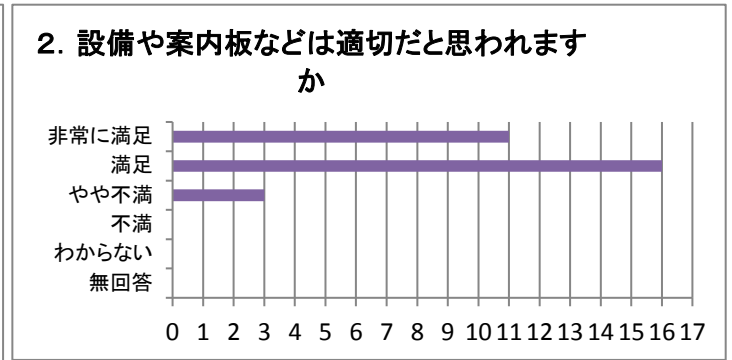
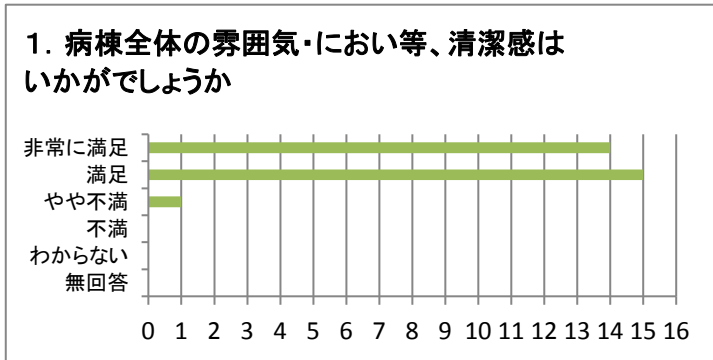


# ・入院患者様アンケート結果

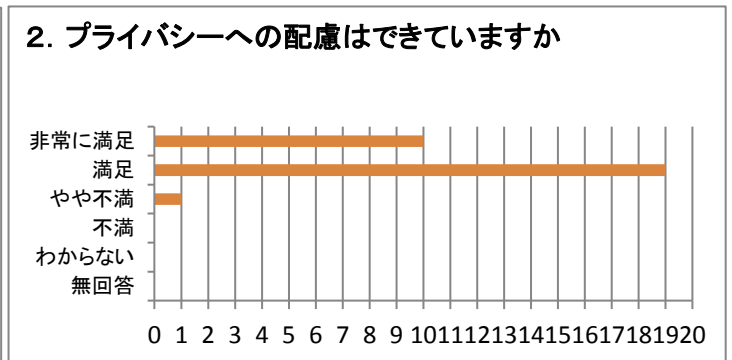
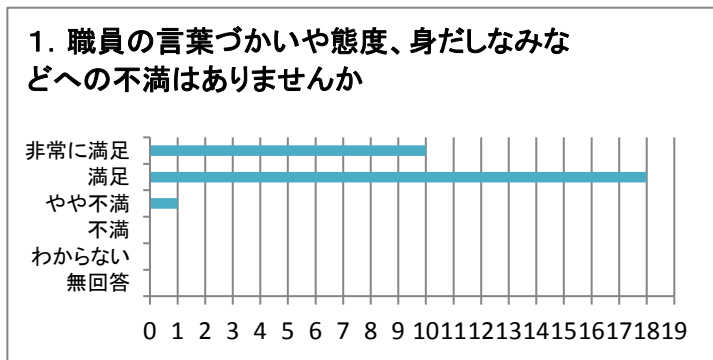
( 総合ケア )病棟



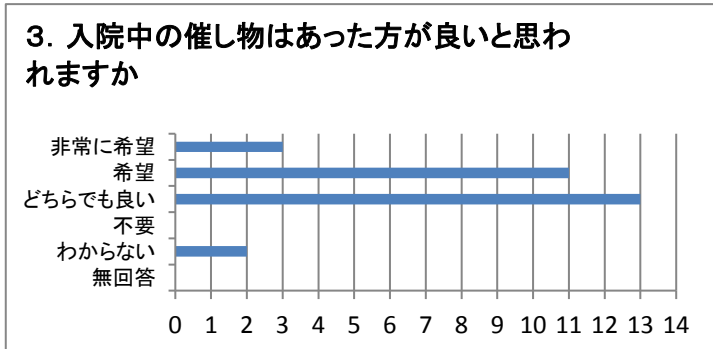
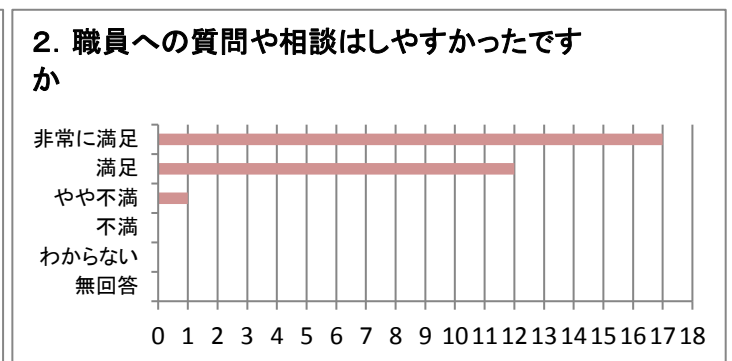
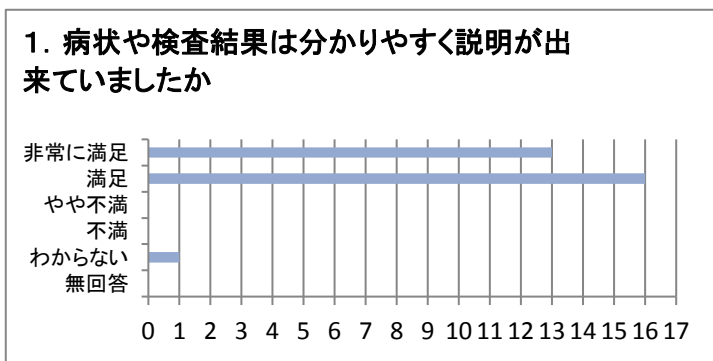
## ・施設面について



## ・接遇面について

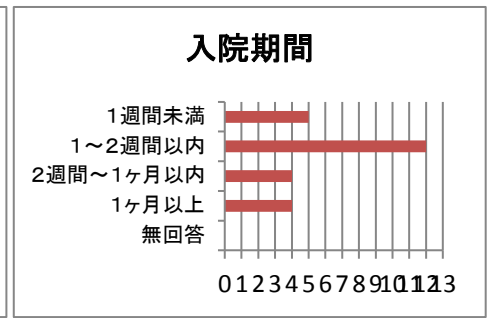
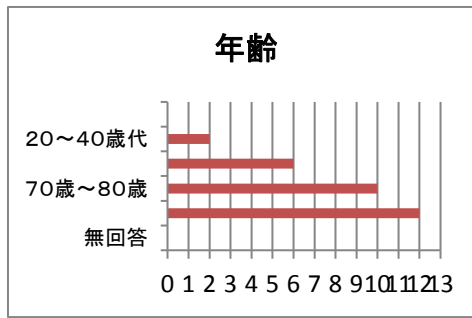
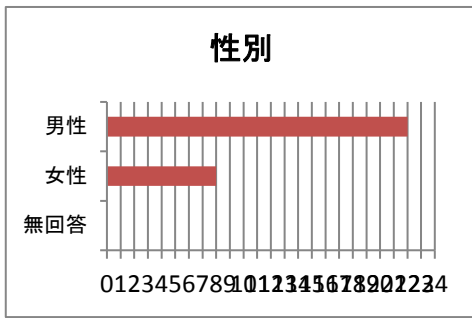


## ・治療に関する事・サービス面について

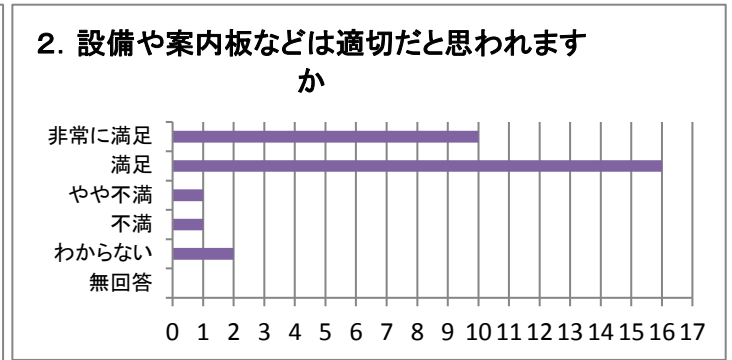
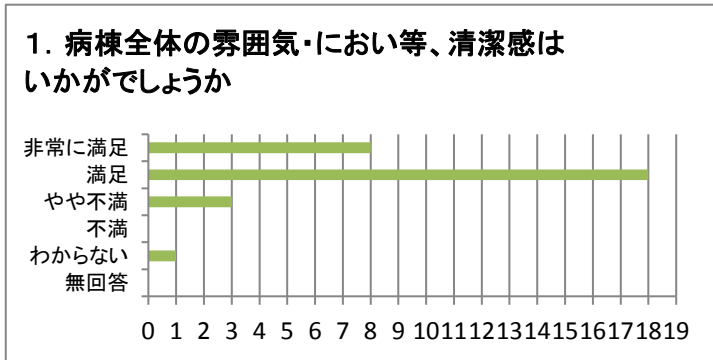


# ・入院患者様アンケート結果

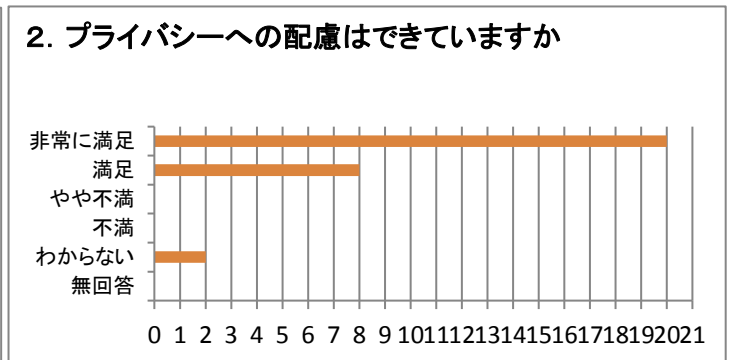
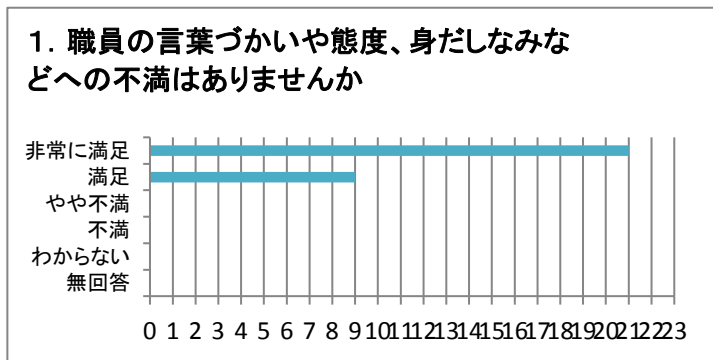
( 包括ケア )病棟



## ・施設面について



## ・接遇面について



## ・治療に関する事・サービス面について

